



2 Bedrooms | 1 Bathroom | 1 Reception Room

Foxley Lane | Purley | CR8 3ED

Guide price £330,000

LOFT

Foxley Lane | Purley | CR8 3ED
Guide price £330,000

- Chain Free! Unique and beautifully presented split level converted apartment
- Staircase leading to up your main bedroom, giving the feel of a house and true privacy
- Spacious rooms throughout with large hallway with utility cupboard for washing machine/tumble dryer
- Open plan modern kitchen/living space with ample space for lounging and dining
- Large bay windows with views across the Fir trees, flooding the whole apartment with light
- Elegant bathroom with storage and brand new boiler
- Double bedrooms and stylish built in wardrobes to bedroom one creating a dressing area
- Ideal location for Purley town centre and minutes walk to the station



A perfect first time buy or family home with a unique layout, giving the feel of being in a house! A sought after location a stones throw from the amenities and ready to move into!



Second Floor

Hallway

Kitchen/Reception Room

18'0 x 17'8 (5.49m x 5.38m)

Bathroom

Bedroom 2

11'0 x 9'0 (3.35m x 2.74m)

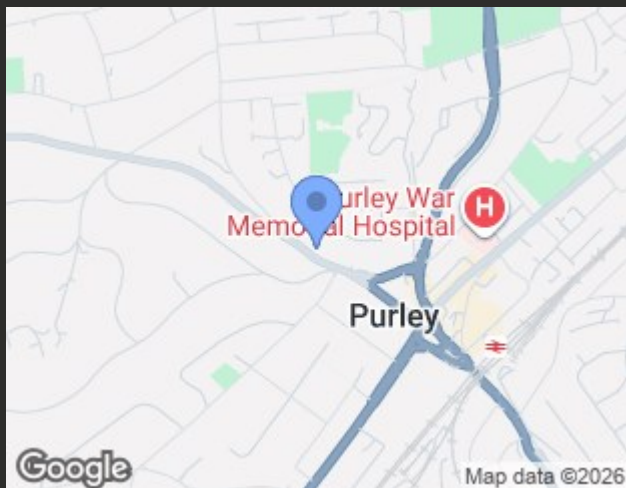
Third Floor

Bedroom 1

17'3 x 10'0 (5.26m x 3.05m)

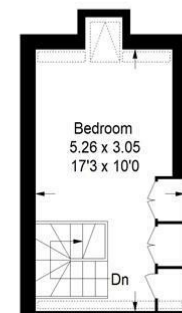
Outside

Communal Gardens

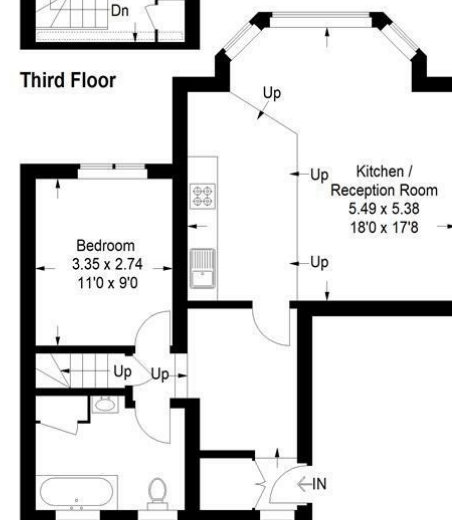


Foxley Lane, CR8

Approximate Gross Internal Area
72.2 sq m / 777 sq ft



Third Floor



Second Floor

= Reduced headroom below 1.5 m / 5'0

This plan is for layout guidance only. Not drawn to scale unless stated. Windows and door openings are approximate. Whilst every care is taken in the preparation of this plan, please check all dimensions, shapes and compass bearings before making any decisions reliant upon them. (ID1143677)

EPC Rating: E

23a High Street
Purley
Surrey
CR8 2AF
0208 660 8070
hello@loft-estates.co.uk